

**Photos compiled for Chair Stevens and  
Members of the House General,  
Housing and Military Affairs Committee**



Dan Cahill  
Burlington Parks, Recreation and  
Waterfront  
Testimony Date: 01/30/2020

# 311 Property



# 311 Community Garden



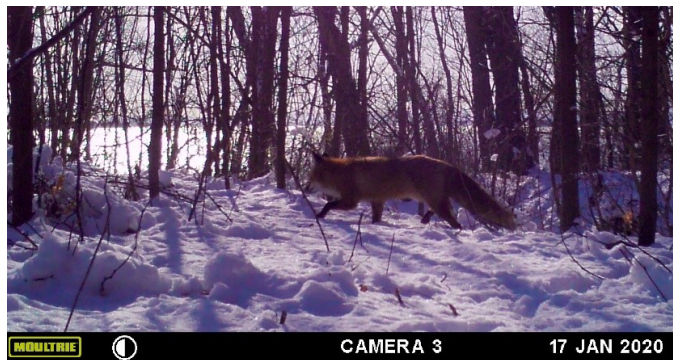
View of both gardens from the north.

Volunteers help plant raspberry bushes for everyone to eat.



Gardener's plots in full bloom

# Wildlife at 311



# Volunteers



A volunteer helps transport mulch to trees being planted.

Volunteers help plant trees on the edge of the bluff leading down to the bike path. This is a very ecologically sensitive area.



Volunteers plant new trees in the open field at 311.

## Restoration Trees



Over 200 trees delivered from the Intervale nursery and ready to be planted.

The open field at 311 after a volunteer event.

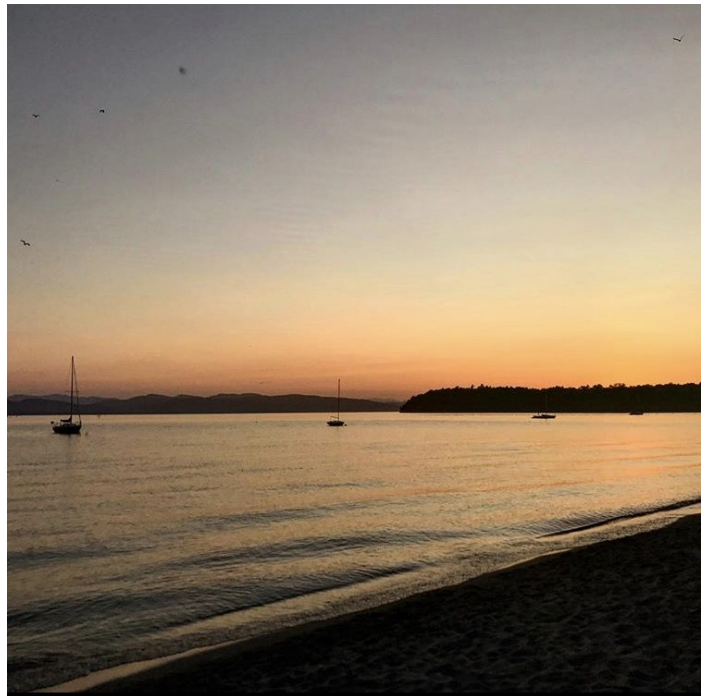


A small section of the field after tree planting.

## Burlington Shoreline Access



311 shoreline



View from 311 shoreline looking  
north to Rock Point